



THE COMMUNITY AND WATERSHED RESILIENCE PROGRAM

WHAT IS THE COMMUNITY AND WATERSHED RESILIENCE PROGRAM?

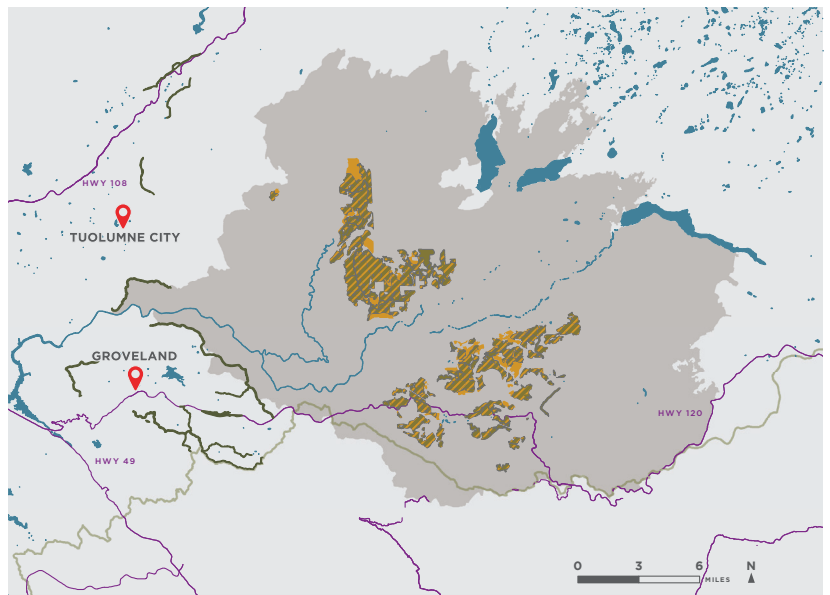
The Community and Watershed Resilience Program (CWRP) is a grant funded by the U.S. Department of Housing and Urban Development through the National Disaster Resilience Competition.

This \$70 million project is a collaborative effort made up of local, state, and federal partners including Tuolumne County, California Department of Housing and Community Development, Sierra Nevada Conservancy, California Environmental Protection Agency, Governor's Office of Planning and Research, U.S. Forest Service, California Department of Forestry and Fire Protection, and the U.S. Department of Housing and Urban Development.

A COMMUNITY IN PERIL

The 2013 Rim Fire burned more than 257,000 acres and devastated the landscape and local communities. It resulted in significant impacts to the local economy, threatened access to clean and drinkable water, disrupted the lives of thousands of people, and damaged air quality. Initial estimates indicate that the Rim Fire released 11 million metric tons of greenhouse gasses (GHGs), or roughly equivalent to the annual GHG emissions from 2.3 million cars.

The CWRP is designed to address unmet recovery needs in the Rim Fire footprint, while also supporting community protection and resilience.



WHAT DOES COMMUNITY PROTECTION AND RESILIENCE LOOK LIKE?

A more resilient watershed and community are better prepared for the next intense fire. The CWRP will achieve this through a series of three projects:

- The Community Resilience Center (CRC) will provide resources and community protection from future fires.
- The Forest and Watershed Health Program (FWHP) will restore forests and watersheds to be healthy and resilient to future disturbances.
- A Biomass Utilization Facility (BUF) will utilize woody biomass and support ongoing forest restoration efforts.

The projects will serve as a model to proactively plan and think about resilience differently in their communities.

CWRP PROJECT MAP - December 2017



To find out more about the CWRP, visit:

www.hcd.ca.gov/community-development/disaster-recovery-programs/ndrc.shtml





PILLAR: COMMUNITY RESILIENCE CENTER(S)

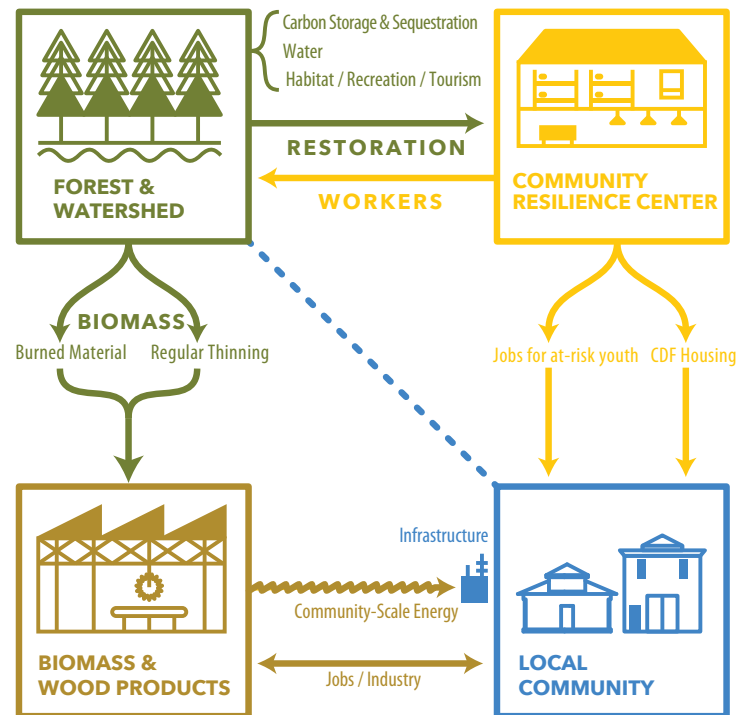
Approximate funding awarded: \$20 mil

Date to be completed: 2022

The Community Resilience Center(s) (CRC), led by Tuolumne County, will provide shelter and necessary resources in the event of a disaster. It will also support community services, educational programs, and job training year-round. The center(s) will be located within Tuolumne County and serve communities previously affected by the Rim Fire.

Extensive stakeholder outreach is currently underway to solicit public input on the design, services, and locations of the CRC.

The program will help others to proactively plan and think about resilience differently in their communities.



Three pillars of the Community and Watershed Resilience Program

To find out more about the CRC, visit:
www.tuolumnecounty.ca.gov/951/National-Disaster-Resilience-Competition

