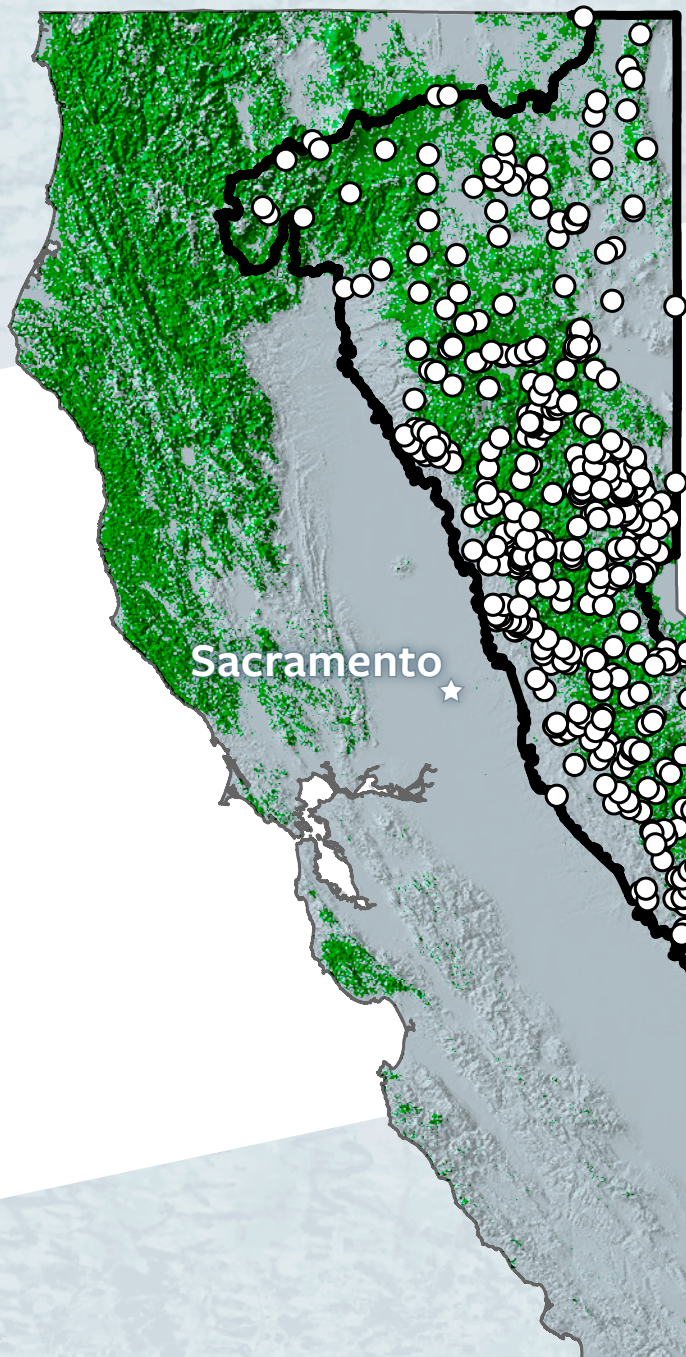




20 YEARS OF IMPACT



Since 2004, the SNC has invested in

610 PROJECTS

throughout the Sierra-Cascade region,
promoting wildfire & climate resilience,
conserving natural & working lands,
and improving outdoor access.

Last updated October 2024.

View this impact brief online: sierranevada.ca.gov/impact-brief

IMPACTS ON THE GROUND

WILDFIRE & CLIMATE RESILIENCE

165,000 acres treated

EXAMPLE ► The SNC funded work, including 3,500 acres of prescribed fire, in the Caples Creek watershed to restore the headwaters of the El Dorado Irrigation District's water system. In 2021, the Caldor Fire burned up to the project area, then slowed and changed course, giving firefighters time and space for critical community protection efforts.



855,000 acres under planning

EXAMPLE ► Two SNC grants totaling \$750,000 helped create the North Yuba Forest Partnership and facilitate a 275,000-acre wildfire-resilience planning effort. In 2022, the North Yuba watershed was identified as a U.S. Forest Service Wildfire Crisis Strategy Priority Landscape and received \$160 million in federal funding for implementation.



Large-scale restoration projects require lots of planning, but implementation funding can be unpredictable and have short expenditure windows. Small, early investments bringing collaboratives together to complete project plans and permitting ensure landscapes are ready when implementation funds become available from SNC or other funders.

5:1 PLANNED VS. TREATED ACRES



24 projects protected communities & landscapes from megafires

EXAMPLE ► The 2018 Camp Fire took 85 lives and left behind a mostly scorched landscape of dead trees and burned homes. Amidst the destruction remained pockets of green trees, unburned neighborhoods, and Pine Ridge School. These pockets of protection were created by firefighters working in forests thinned before the Camp Fire by the Butte County Fire Safe Council using less than \$1 million of SNC funding.

Wildfire & Climate Resilience Work



254 fuels reduction projects



121 community protection projects



88 meadow or stream restoration projects



31 fuel breaks

29 biomass utilization projects



17 water infrastructure projects



16 reforestation projects



LAND CONSERVATION & STEWARDSHIP

EXAMPLE ► The SNC contributed \$735,000 towards a conservation easement on the 602-acre Cinnamon Ranch in the Owens Valley, held by the Eastern Sierra Land Trust. Selling certain development rights allowed the family to hire additional ranch hands, modernize their farming and grazing practices to conserve and protect water resources, and open an additional business creating 7 jobs. Today, a new family business is helping others to adopt modern, waterwise, agricultural practices.



84,000 acres conserved

70% working lands

30% non-working lands



EXAMPLE ► The SNC made a small, time-sensitive grant to American Rivers for an environmental assessment and appraisal of the 400-acre Ackerson Meadow on the edge of Yosemite National Park. This opened a path for joint public/private fundraising efforts that led to the purchase and transfer of the land, expanding Yosemite National Park in 2016. American Rivers is now restoring this meadow and biodiversity hotspot.

1,400 acres returned to tribes

EXAMPLE ► The Tubatulabal Tribe calls an unusually green valley where the Southern Sierra meets the Mojave, Kolo Kam ap (duck place). This is the first culturally significant land returned to the tribe, thanks to the work of Western Rivers Conservancy and funding from the SNC and Wildlife Conservation Board. The property, also known as Fay Creek Ranch, contains freshwater springs, a hot spring, and Fay Creek, along with grinding stones and trails to the Kern Plateau that the Tubatulabal have been using since time immemorial.



OUTDOOR ACCESS

120 miles of trail constructed



740 miles of trail planned

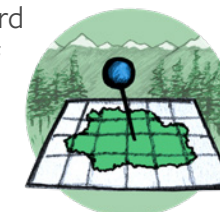
EXAMPLE ► The SNC has granted \$2.1 million to the Sierra Buttes Trail Stewardship's Connected Communities Project, including the creation of its 581-mile Trails Master Plan. The plan aims to link 15 mountain towns in the Lost Sierra, supporting local livelihoods by improving trail access and connectivity. Many miles of trail are already under construction.



15 sites improved for public use

18 properties opened to recreation

EXAMPLE ► The SNC contributed \$1 million toward the American River Conservancy's acquisition of the Gold Hill Ranch and Wakamatsu Tea and Silk Colony. The 272-acre purchase preserved the first Japanese settlement in North America (est. 1869) for educational and recreational uses, and prime agricultural land that remains a working organic farm.



EXAMPLE ► The SNC contributed \$1 million towards the purchase of 462-acre Grizzly Creek Ranch in Plumas County to secure a permanent home for the outdoor education programs run by Sierra Nevada Journeys. 55 percent of the more than 200,000 kids who have attended the ranch have been from families with financial barriers and 70 percent are students of color.

INVESTING IN OUR PARTNERS



The SNC invests in its partners like its mission depends on it. That's because it does! Unlocking the local knowledge and expertise of Sierra-Cascade organizations is essential to achieving California's natural resource conservation goals.



Technical Assistance

369 funding consultations

65 grantwriting workshops hosted

35+ collaboratives we participate in

Grants by Partner Type

202 conservation nonprofits

65 fire safe councils

20 water agencies

113 land trusts

53 state & federal land managers

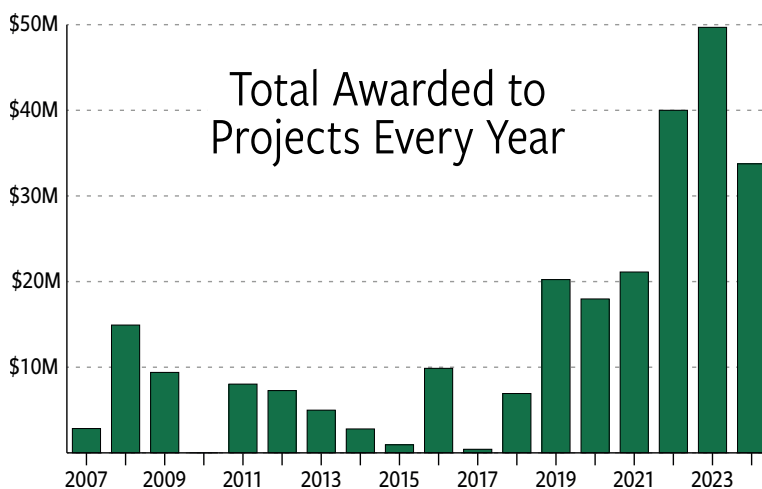
12 colleges & universities

81 resource conservation districts

52 city & county governments

12 tribes & tribal nonprofits

INCREASING INVESTMENT TO THE SIERRA-CASCADE



SNC has used funding efficiently through the years to deliver increasing investments in state priorities in the Sierra-Cascade region. SNC has awarded **\$252 million** to date.

Watershed Improvement Program

SNC's primary initiative, the Sierra Nevada Watershed Improvement Program (WIP), has been identified as a model program for addressing restoration at the landscape scale in state plans and strategies. The WIP's approach to supporting partners through every stage in the life of a project, from convening partnerships to identifying landscape needs through project implementation, inspired the Department of Conservation's Regional Forest and Fire Capacity Program (RFFCP). SNC is an RFFCP Regional Block Grantee and has distributed **\$9 million** back into the Sierra-Cascade region to build the capacity of local partners to plan and design projects. To date, these investments have leveraged an additional **\$217 million** in state, federal, and private funding.