



# September 2024 Governing Board Meeting Presentations





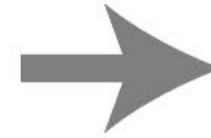
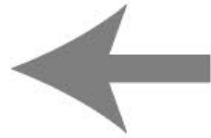
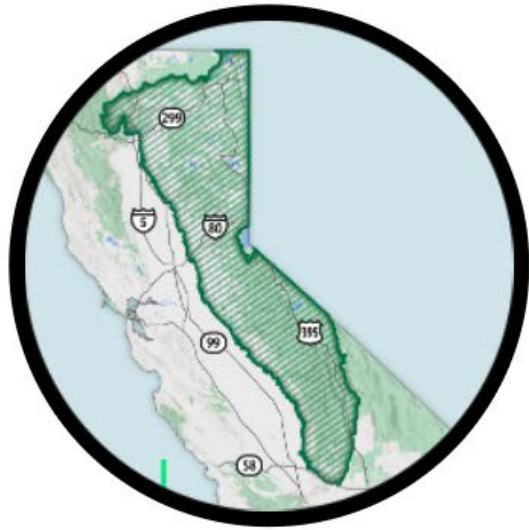
Agenda Item 06c:

# **Policy & Outreach Update**

Brittany Covich

*Division Chief, Policy & Outreach*





## State Policy Update

- SB 867 (Allen) / Prop 4
- AB 2465 (Gipson)
- AB 3023 (Papan)



# Summer Tours



**40 Acre Conservation League**  
June 2024, Emigrant Gap



**Nature-based Climate Solutions**  
August 2024, Donner Summit





**Isaac Silverman**

Sierra Nevada Conservancy

# Tour Highlight on CNRA Instagram





Rim Fire June 2018



Rim Fire July 2024

# Rim Fire Restoration 1



Rim Fire 2018



Rim Fire 2024



## Rim Fire Restoration 2



Rim Fire 2018



Rim Fire 2024



# Rim Fire Restoration 3



Source: Esri, Maxar, Earthstar Geographics, and the GIS User Community  
8/16/24



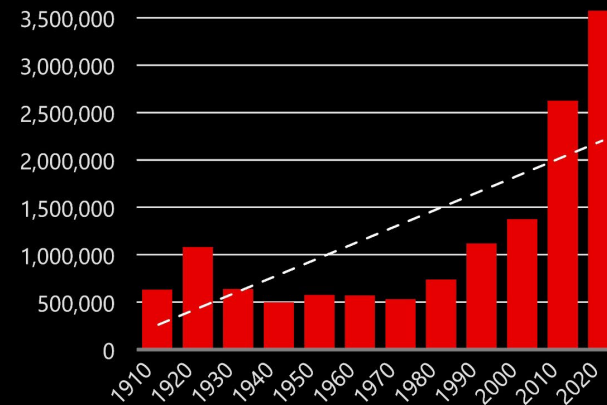
## Total Acres Burned



## Top Five Largest Wildfire

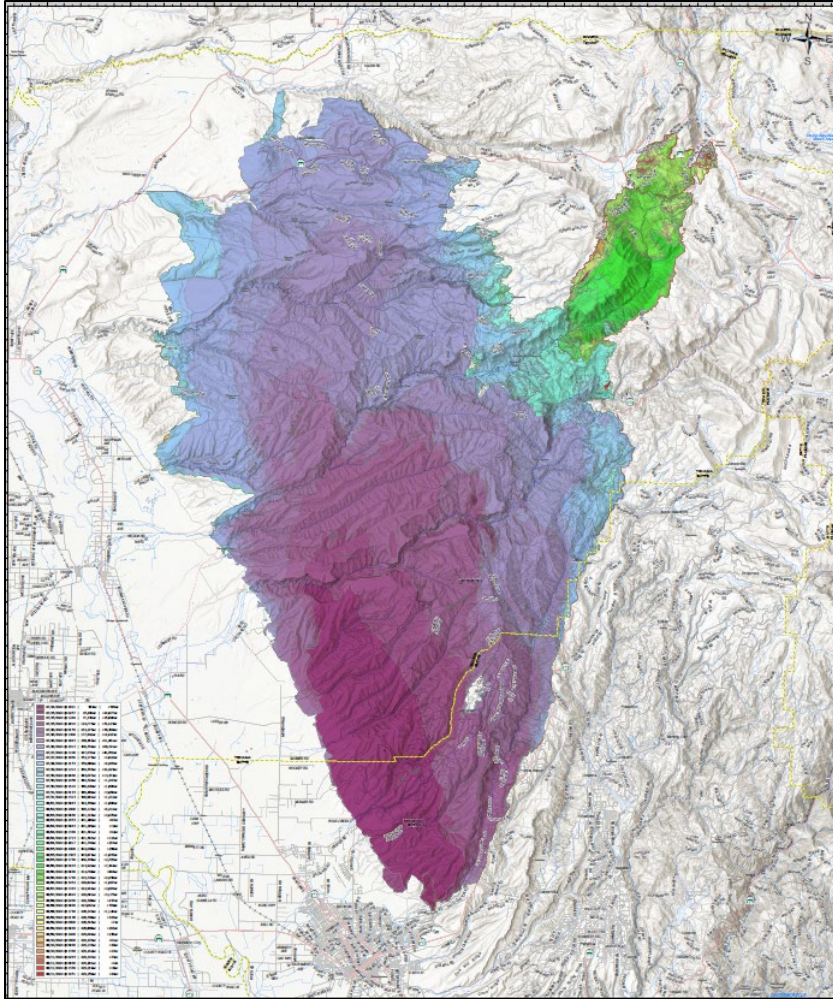
- Park – 429,263
- Borel – 59,288
- Basin – 14,023
- Fresno June Lightening Complex – 10,616
- Aero – 5, 285

## Acres Burned by Decade

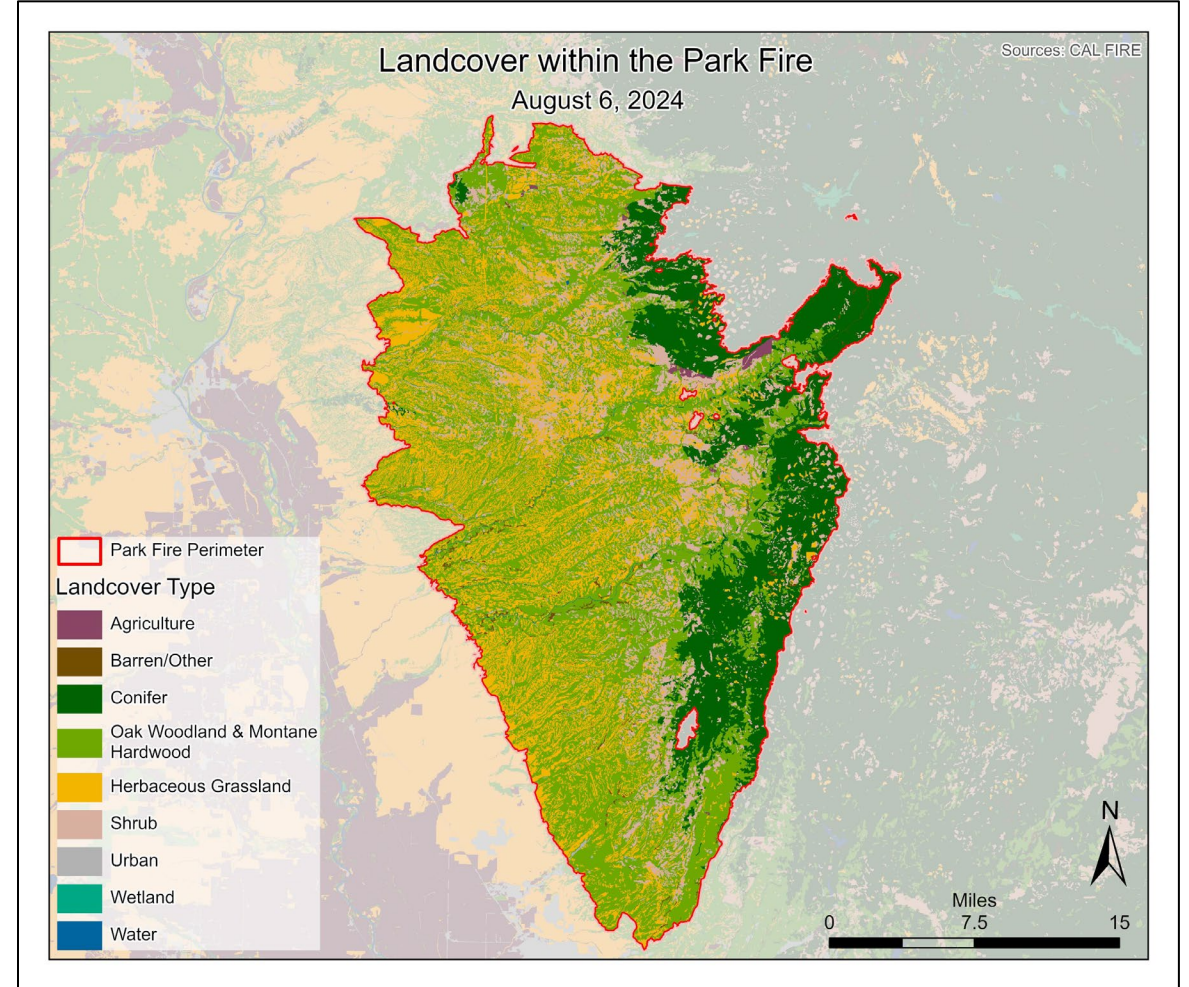


# SNC Region 2024 Fire Season Update





Map credit: CALFIRE



## Zooming in: The Park Fire





**Sierra Nevada Landscape  
Investment Strategy**

September 2022

# **Advancing SNC's *Landscape Investment Strategy***

- Developing Landscape Grant Pilot lessons learned
- Sharing approach & goals
- Tracking outcomes of initial pilot
- Incorporated readiness concepts into RFFCP (RPP)



Agenda Item 07:

# **Grant 1692 Alpine Meadows and Olympic Valley Fire Protection Project Amendment**

Andy Fristensky

*Division Chief, Field Operations & Grants*

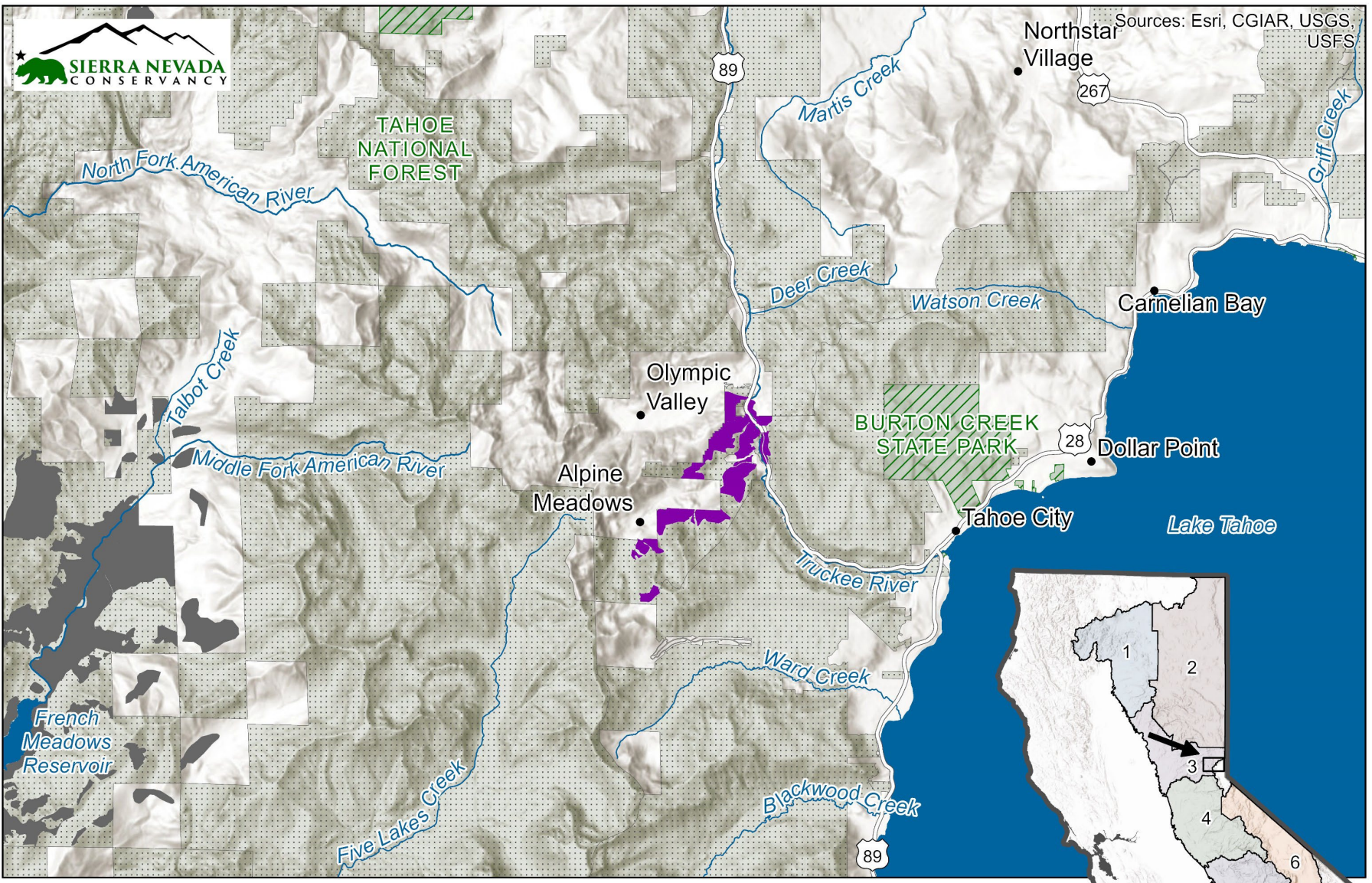




# Project 1692 Background

- Award date: June 2024
- Grantee: National Forest Foundation
- Amount: \$2,449,498

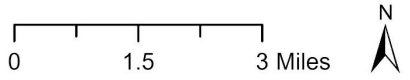




Sources: Esri, CGIAR, USGS, USFS

# Location Map

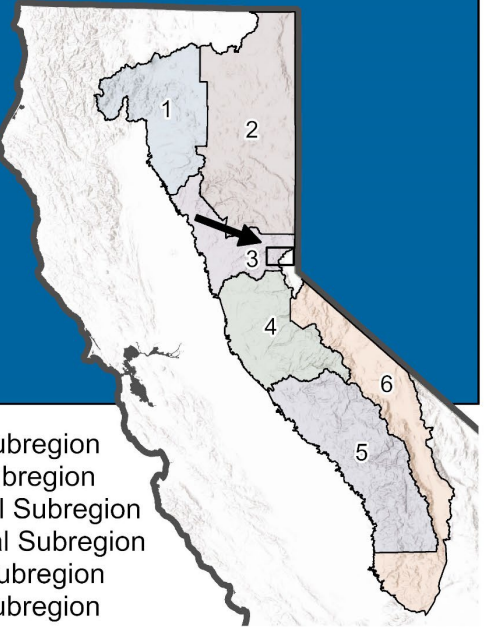
1692: Alpine Meadows and Olympic Valley Fire Protection Project  
National Forest Foundation



Project Area

- Other SNC Implementation Projects
- State Parks
- US Forest Service

1. Northwest Subregion
2. Northeast Subregion
3. North Central Subregion
4. South Central Subregion
5. Southwest Subregion
6. Southeast Subregion





# Original Project Scope



**764 acres**

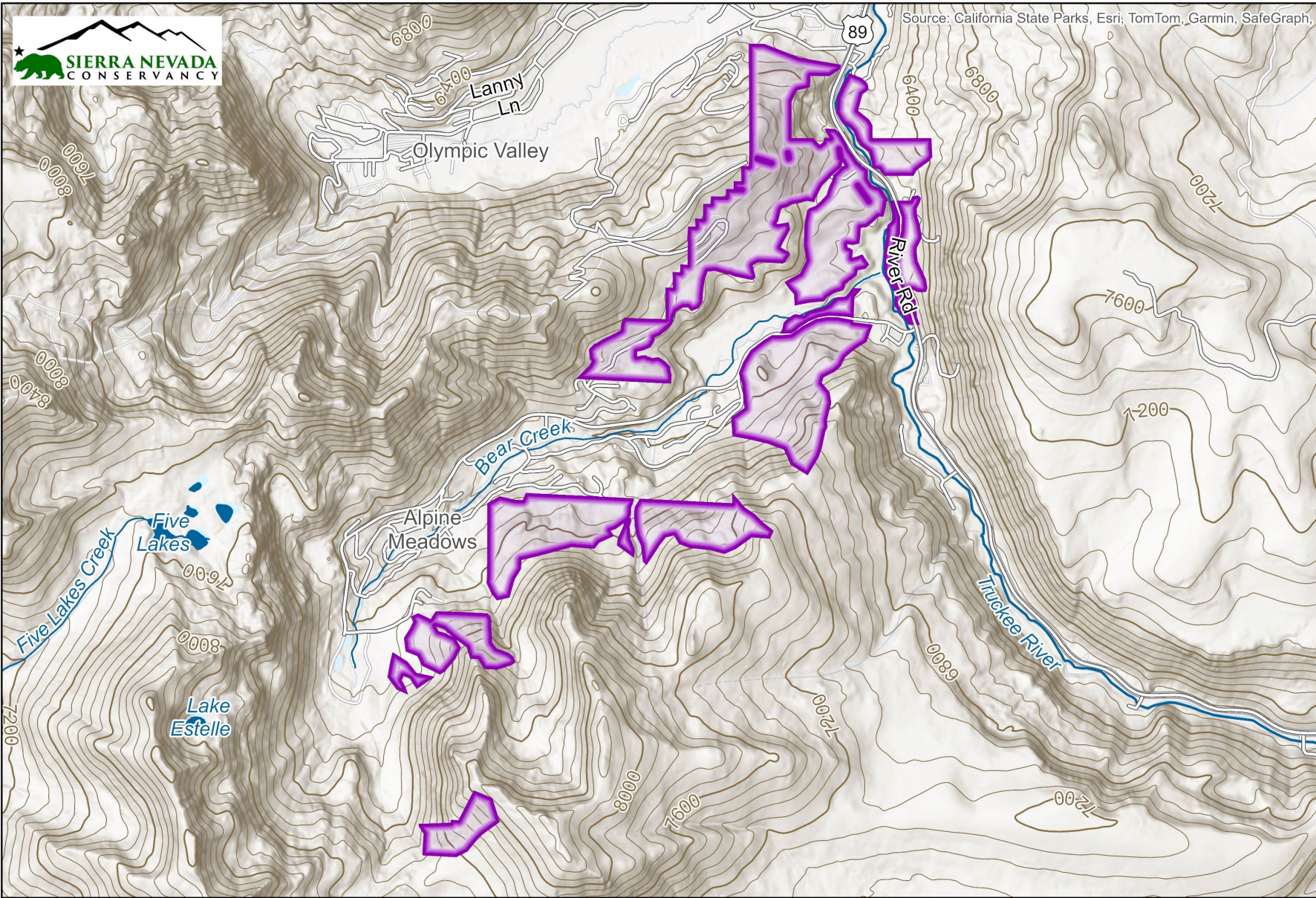
Treat 764 acres in  
Tahoe National Forest



**16" DBH**

Remove surface & ladder fuels,  
small trees up to 16 inches DBH

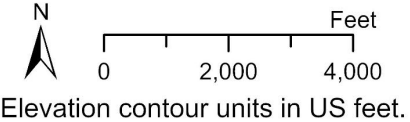




# Topo Map

1692: Alpine Meadows and Olympic Valley Fire Protection Project  
National Forest Foundation

 Project Area





# Amendment

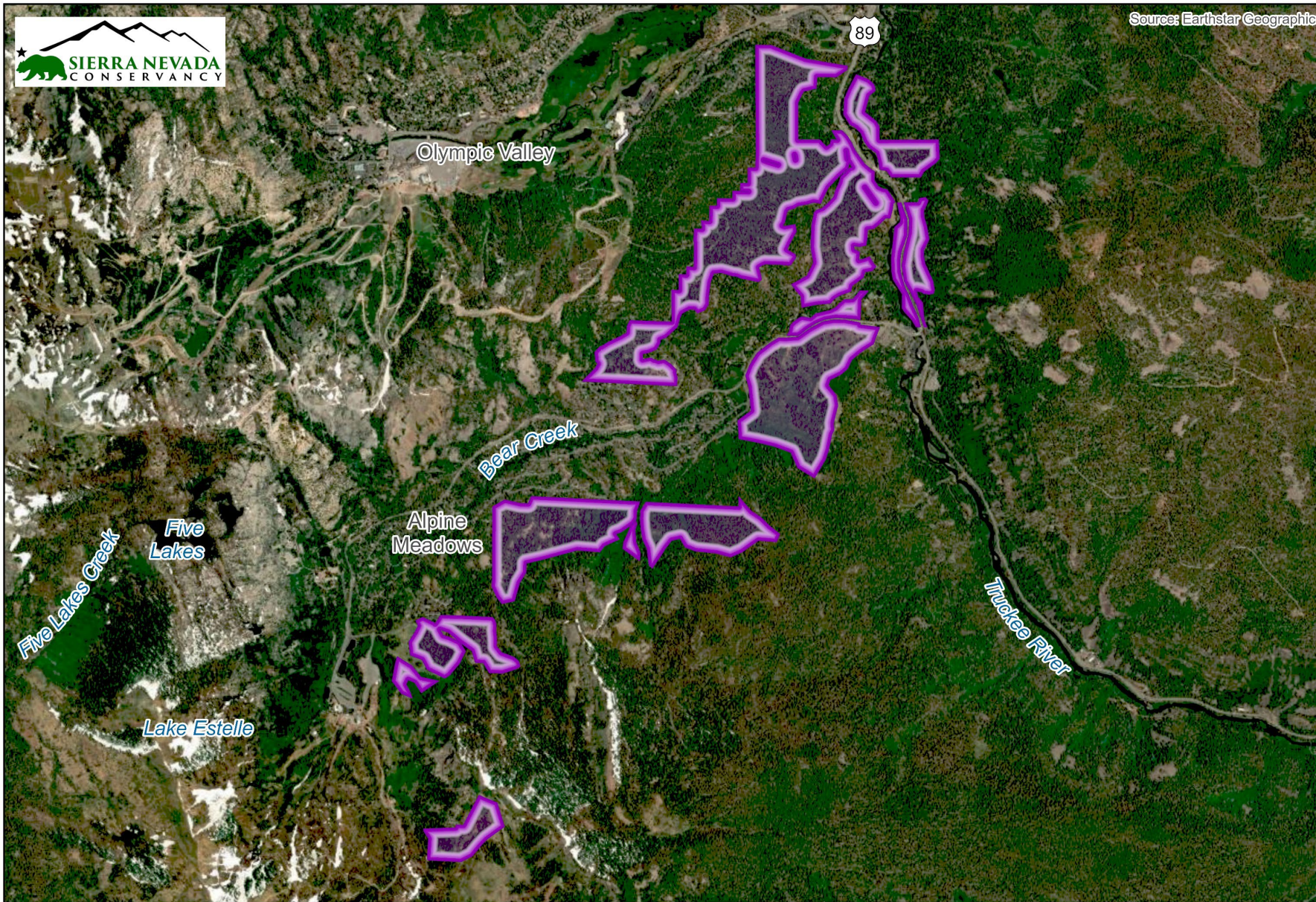
Remove live trees up to **30 inches DBH** if:

- material is accessible by mechanical equipment
- 16-inch diameter limit not adequate to reduce WUI threat



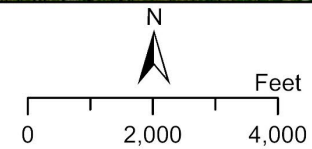


Source: Earthstar Geographics



# Satellite Map

1692: Alpine Meadows and Olympic Valley Fire Protection Project  
National Forest Foundation





# Forest Conditions





# Wildland-Urban Interface



# Recommendation

- Authorize the Executive Officer to file a Notice of Exemption for the Alpine Meadows and Olympic Valley Fire Protection Project (1692) amendment;
- Approve the revised project scope per the Exhibit A; and
- Authorize staff to amend the grant agreement with National Forest Foundation.



Agenda Item 08:

# **Regional Forest & Fire Capacity Program CEQA Determination & Award Recommendation**

Andy Fristensky

*Division Chief, Field Operations & Grants*







## RFFCP Goals

- Increase capacity, collaborative planning, coordination
- Strengthen Regional leadership
- Build a pipeline of forestry and wildfire-protection projects
- Identify, prioritize, plan, and make ready projects



# Project Overview

## 1722-RFFCP WIP Capacity Subgrant— CHIRP Nisenan:

- California Heritage: Indigenous Research Project (CHIRP)
- \$250,000 requested
- 10 acres
- TEK forest management
- Part of larger project (DCTT)

# Environmental Compliance Required

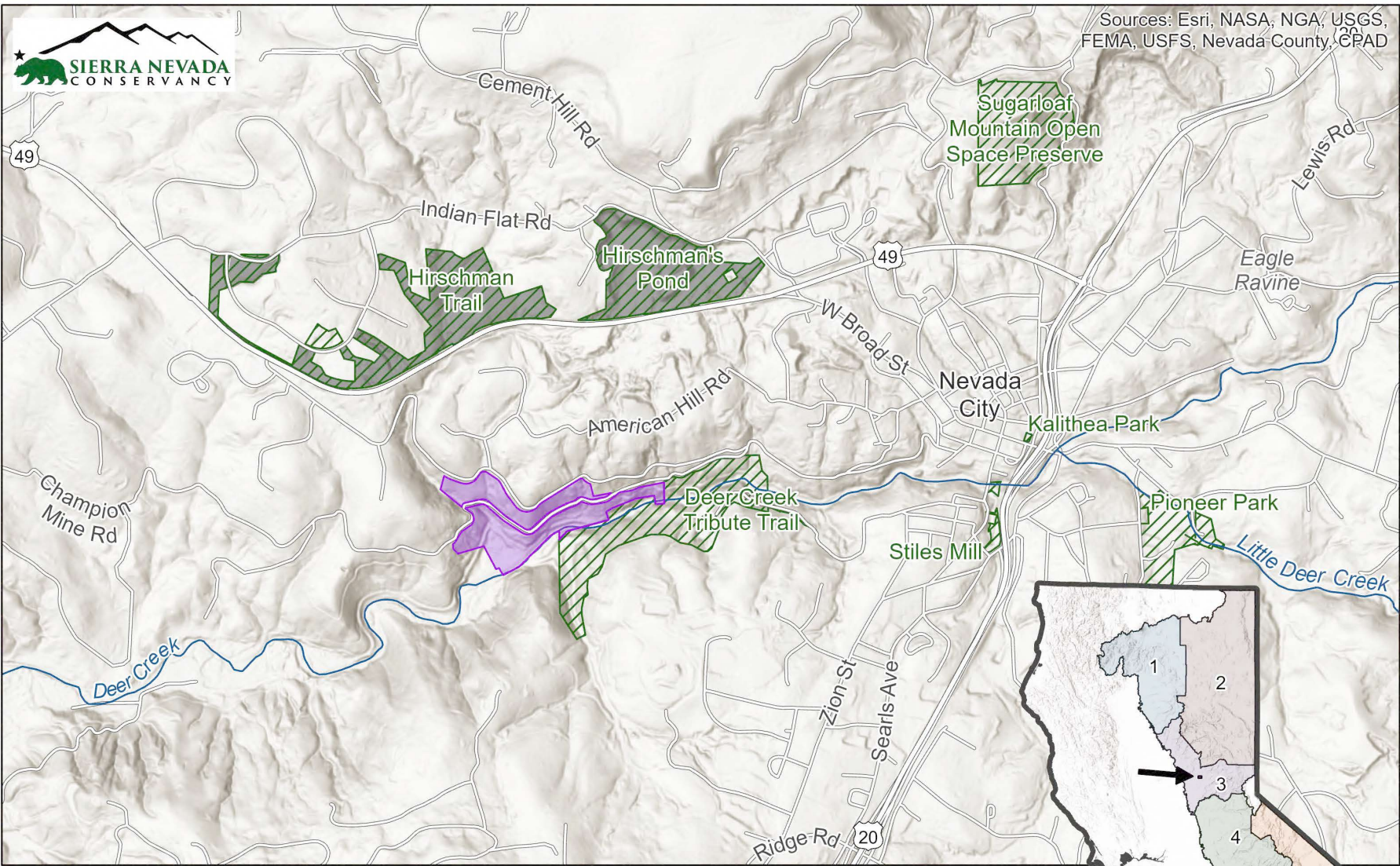
## IS/MND

(Initial Study/Mitigated  
Negative Declaration)

## MMRP

(Monitoring and  
Reporting Program)



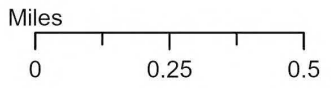


Sources: Esri, NASA, NGA, USGS, FEMA, USFS, Nevada County, CPAD

# Location Map

## 1722-RFFCP: (RFFCP2022) WIP Capacity Subgrant – CHIRP Nisenan

California Heritage: Indigenous Research Project (CHIRP), Nevada City Rancheria Nisenan Tribe

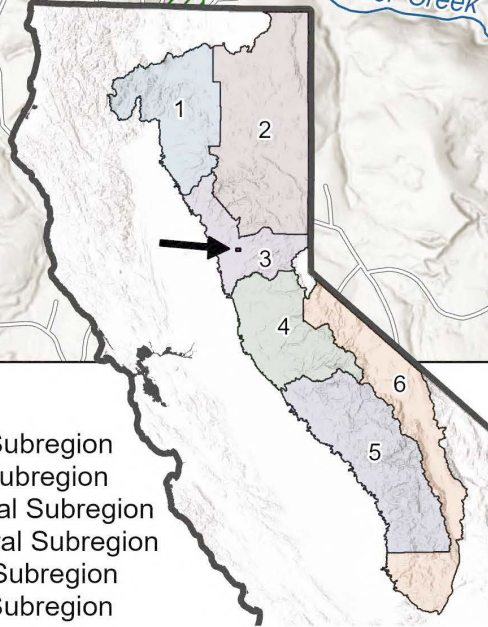


Project Area

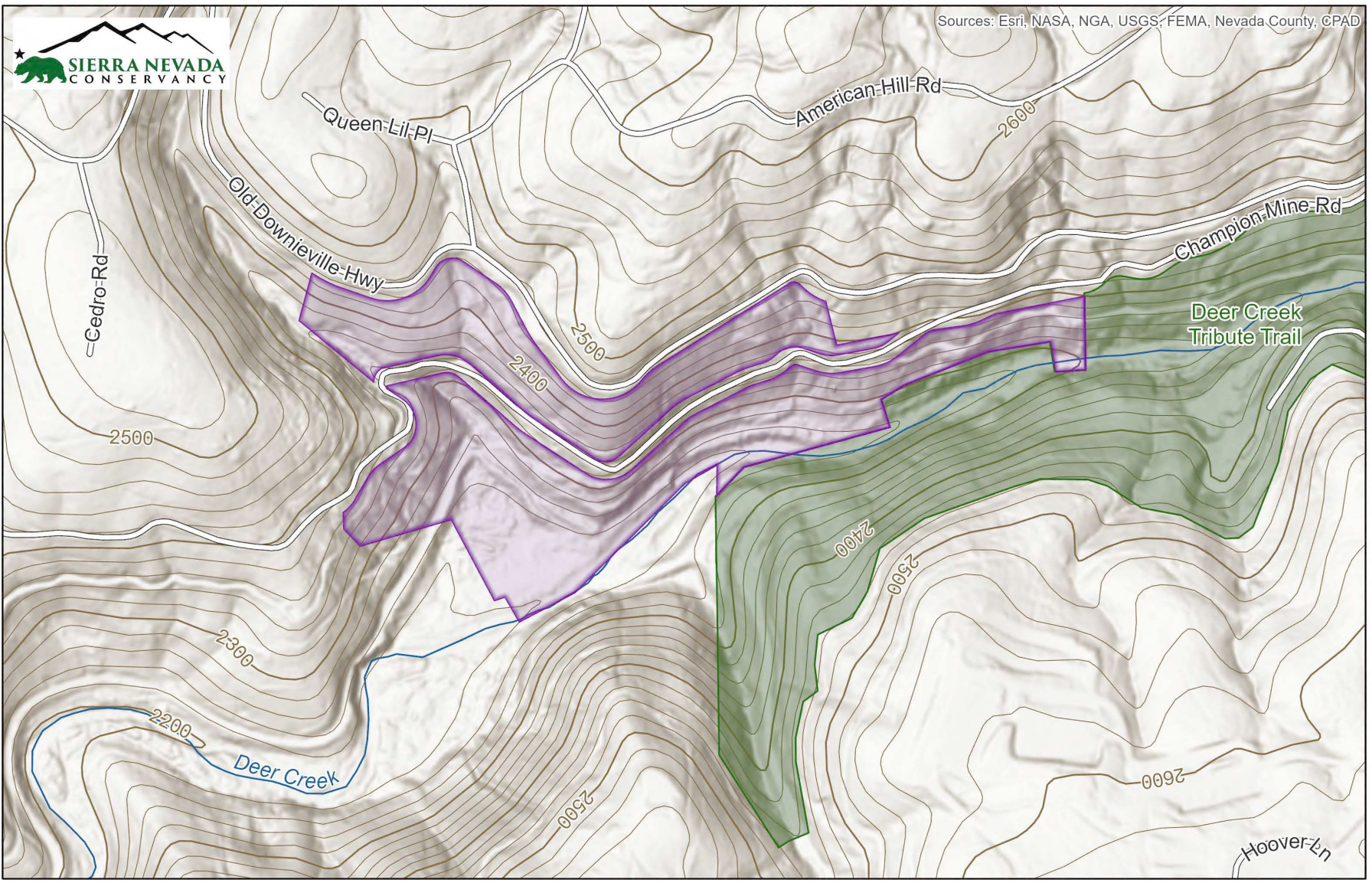
Nevada City Parks and Recreation

Other SNC Implementation Projects

1. Northwest Subregion
2. Northeast Subregion
3. North Central Subregion
4. South Central Subregion
5. Southwest Subregion
6. Southeast Subregion





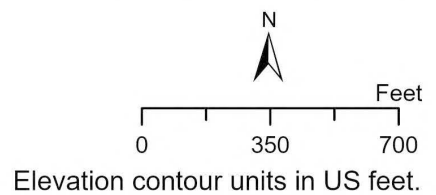




# Topo Map

1722-RFFCP: (RFFCP2022) WIP Capacity  
 Subgrant – CHIRP Nisenan  
 California Heritage: Indigenous Research Project  
 (CHIRP), Nevada City Rancheria Nisenan Tribe

-  Project Area
-  Nevada City Parks and Recreation







# Aerial Map

1722-RFFCP: (RFFCP2022) WIP Capacity Subgrant – CHIRP Nisenan  
 California Heritage: Indigenous Research Project  
 (CHIRP), Nevada City Rancheria Nisenan Tribe





# Project Area



# Recommendation

(CEQA Certification)

- Certify that the Board independently reviewed and considered the information in the Deer Creek Tribute Trail Extension IS/MND (2023) and accompanying MMRP.
- Find that the Board concurs with the Deer Creek Tribute Trail Extension IS/MND and MMRP.



# Recommendation

(Project Approval & Grant Award)

If the Board concurs with the Deer Creek Tribute Trail Extension IS/MND and MMRP:

- Authorize the Executive Officer to file a Notice of Determination as a responsible agency for the 1722-RFFCP (RFFCP2022) WIP Capacity Subgrant—CHIRP Nisenan project; and
- Approve a grant award in the amount of \$250,000 to the California Heritage: Indigenous Research Project and authorize staff to enter into agreements necessary for project implementation.





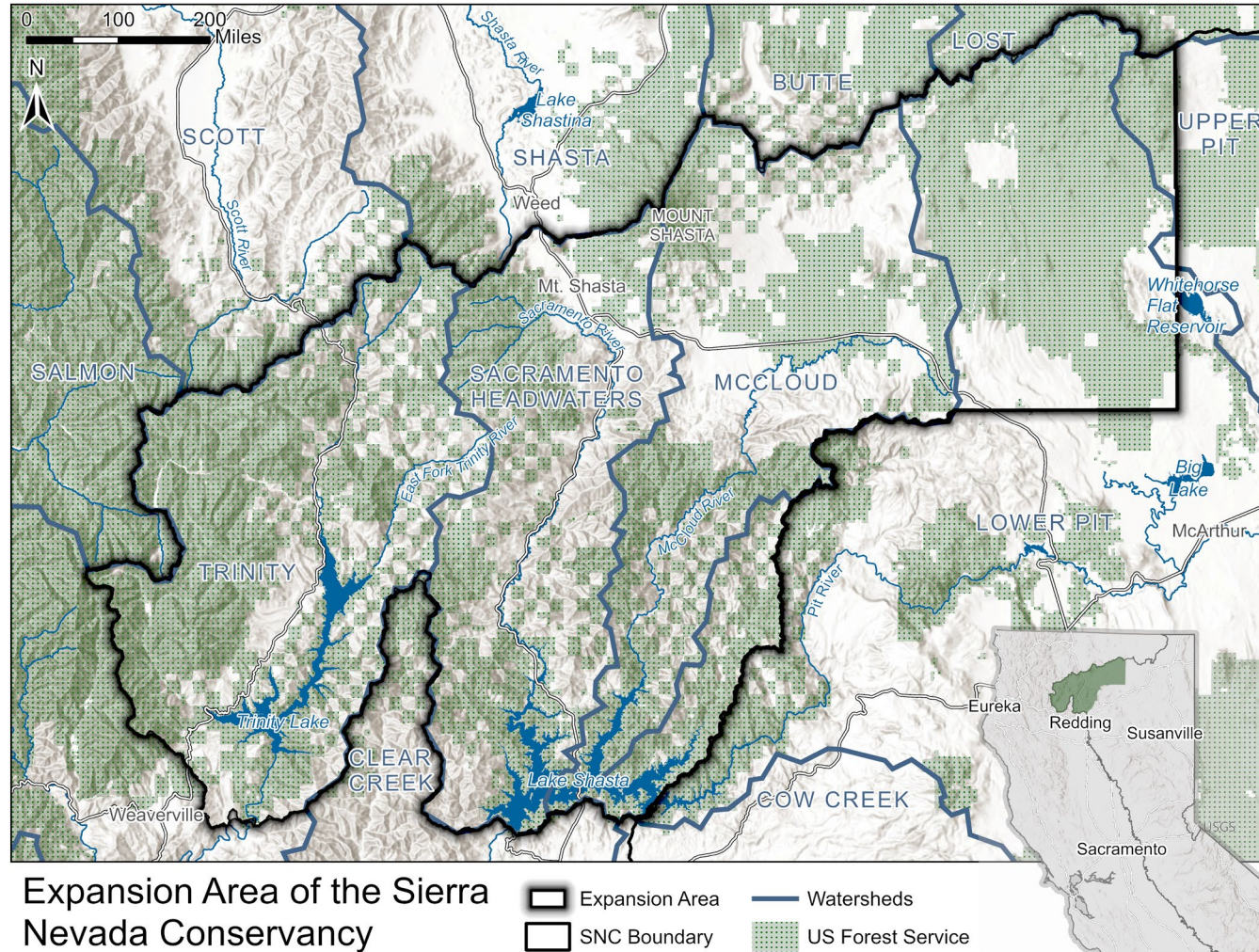
Agenda Item 9:

# Boundary Expansion Geography Overview

Tuli Potts  
*Area Representative*



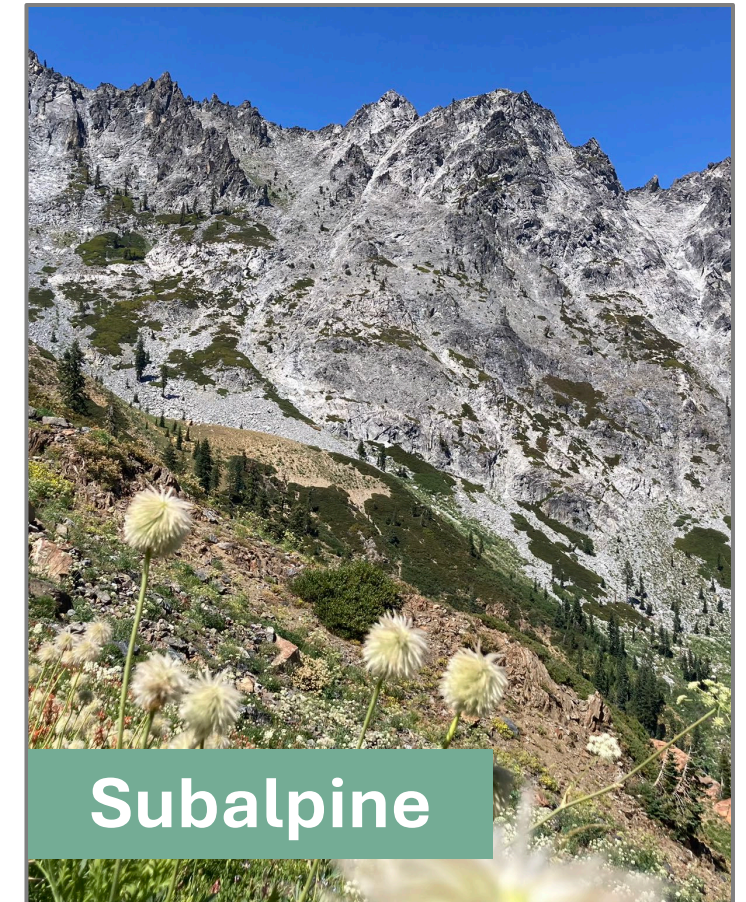
# What is the Expansion Area?



- 1.3M acres
- 3 watersheds
- 2 new counties
- Numerous jurisdictions
- Numerous opportunities

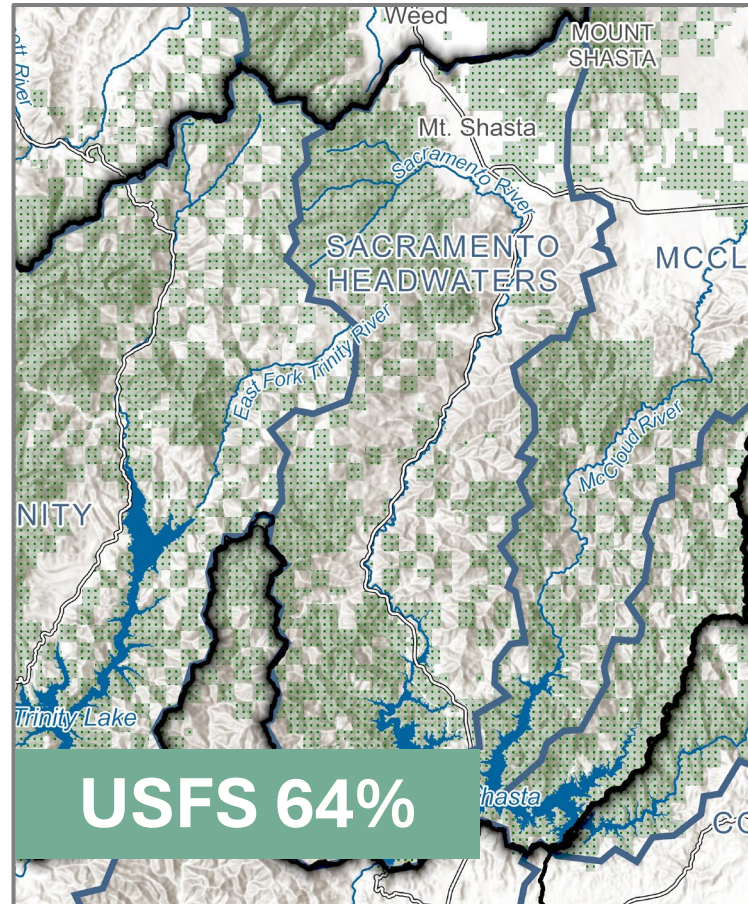


# Landscape Characteristics





# Geography Characteristics







## SNC's Impact in 2.5 Yrs.

- Building Relationships
- Connecting Partners
- Investing in Collaboratives
- Connecting Funding
- Investing \$17.9M
- Learning....lots of learning





Agenda Item 10:

# Regional Priority Plan Update

Sarah Campe  
*Regional Scientist*





# What is a Regional Priority Plan (RPP)?



**Deliverable**  
(RFFCP)



**Depiction**  
(what, why, where, who)



**Strategy**  
(WFR Action Plan)



# Elements of an RPP



## Partnership Capacity

(governance, members, jurisdictions)



## Project Portfolio

(strategy, objective, project status)

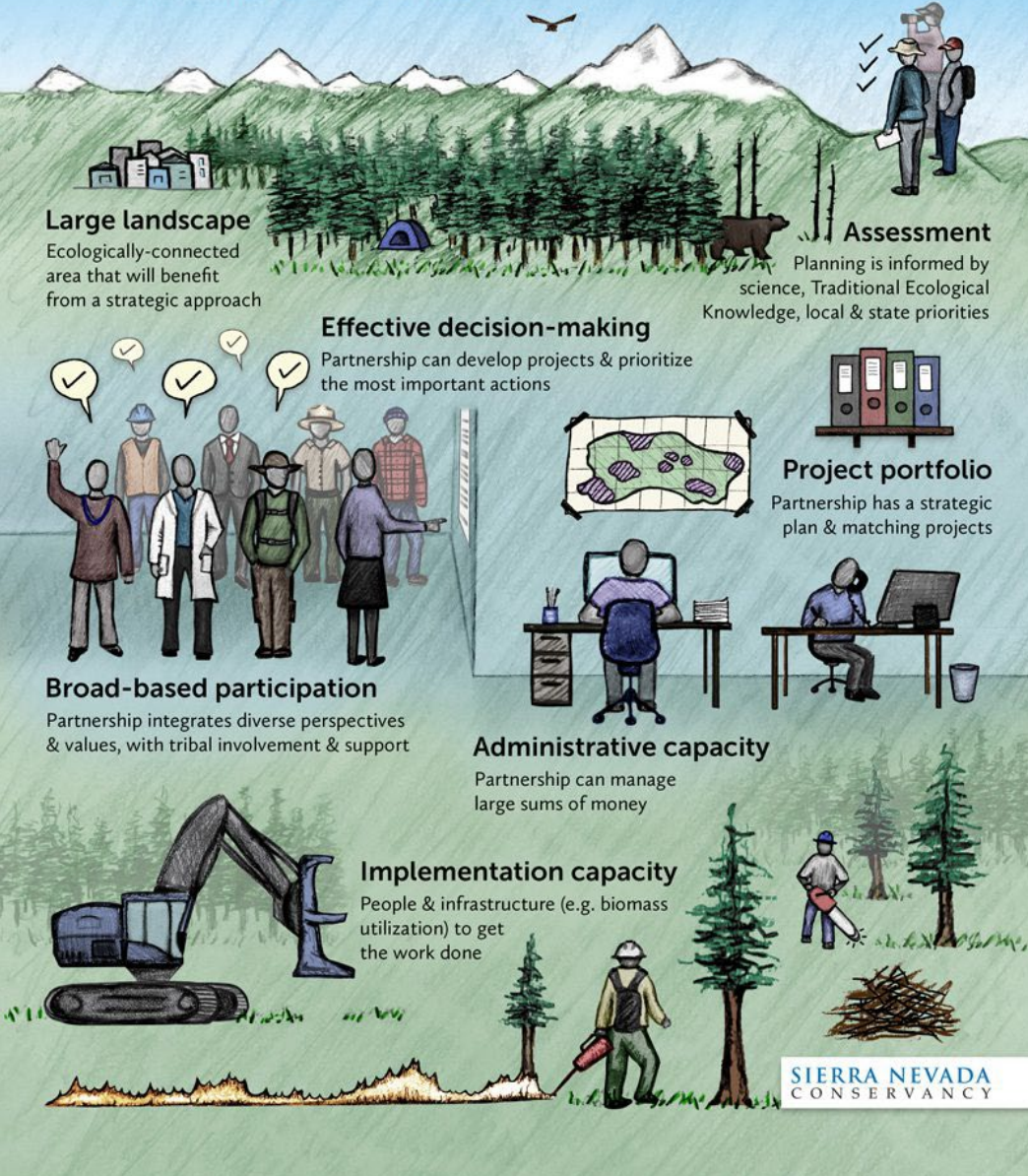


## Landscape Characteristics

(conditions, vulnerabilities, assets)

# LANDSCAPE GRANT READINESS

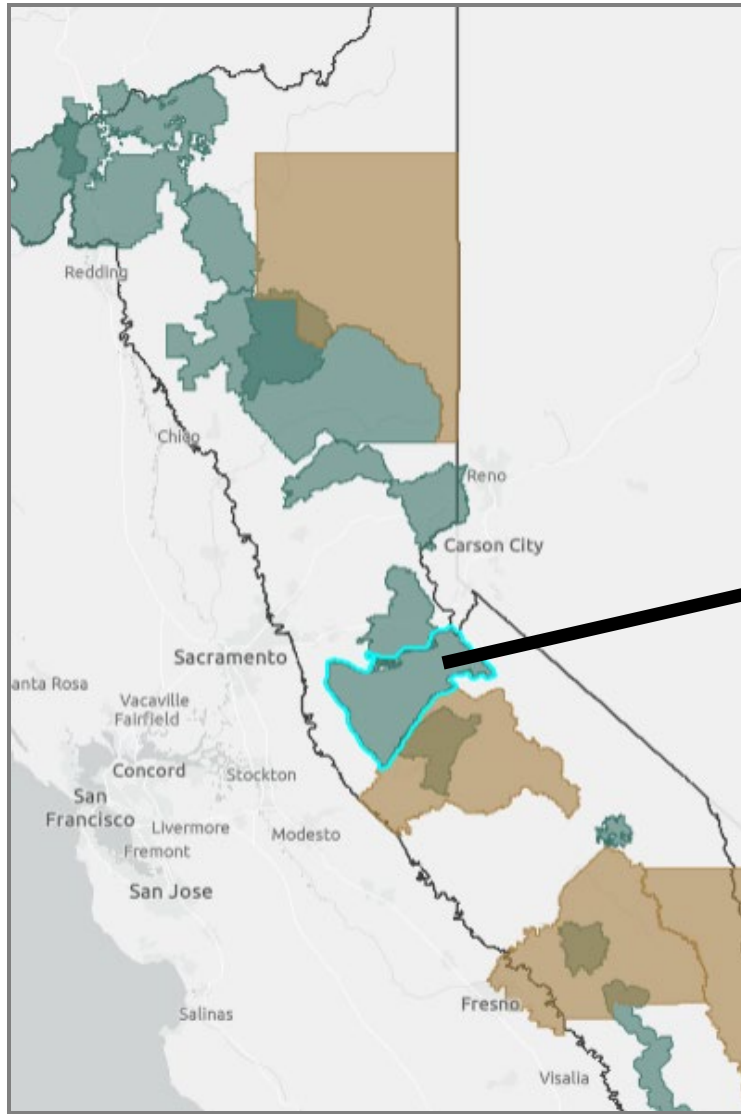
What it takes to work at scale



## SNC's RPP

- Large landscape
- Effective decision-making
- Assessment
- Broad-based participation
- Project portfolio
- Administrative capacity
- Implementation capacity






Amador Calaveras Consensus Group

Table Edit Get directions Zoom to

### Partnership Details



Type	Collaborative
Jurisdictional Focus	Federal
Governance	MOA
Contact Info	Lisa Lucke, ACCG Administrator (luckewriter@gmail.com)

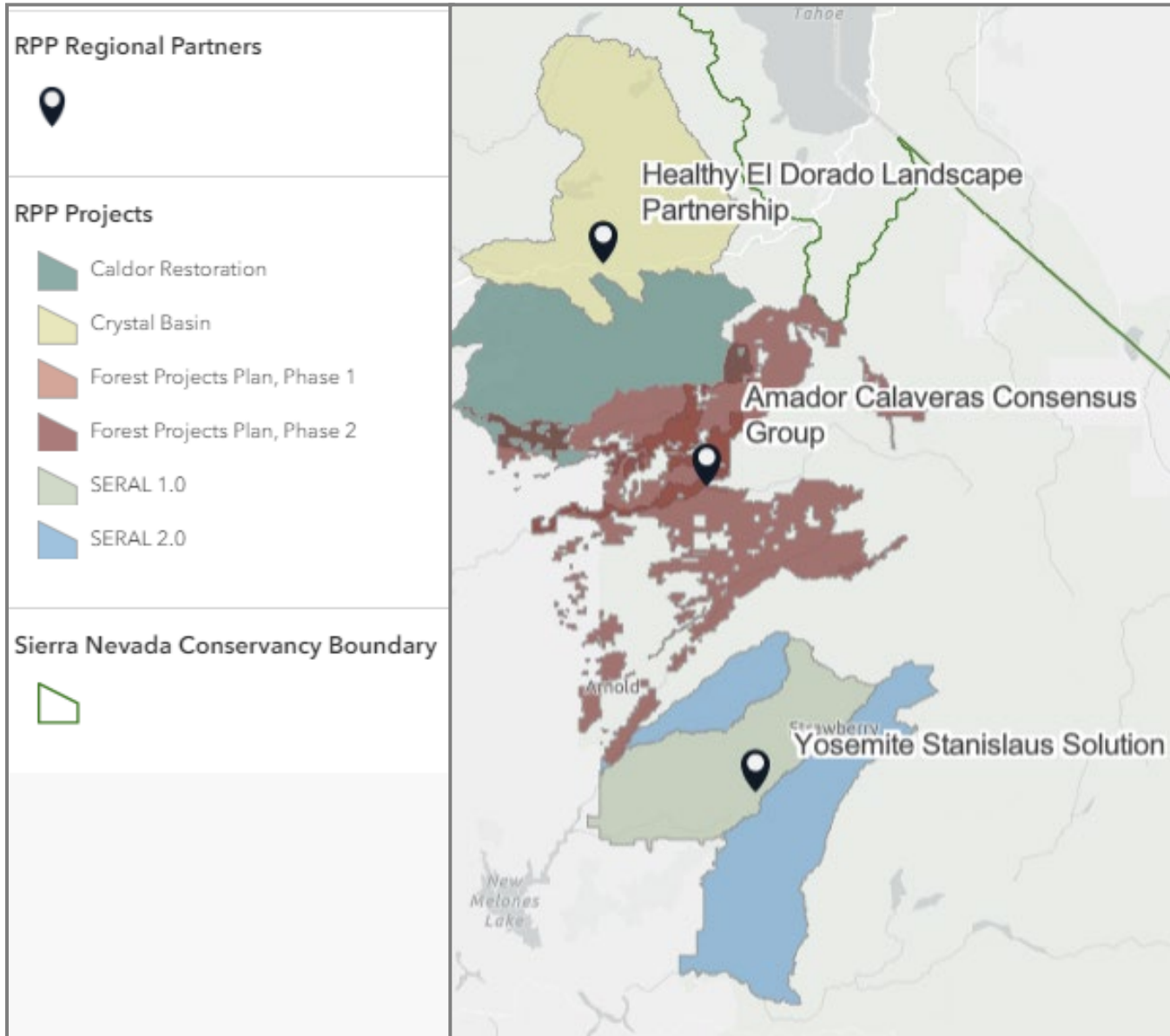
[Website for ACCG](#)

[Members of ACCG](#)

### Project Portfolio

Portfolio Objective	Forest Health
Portfolio Development	ACCG's Strategic Landscape Assessment Work group (SLAWG) conducted developed a landscape prioritization tool based on the

# Partnership Capacity

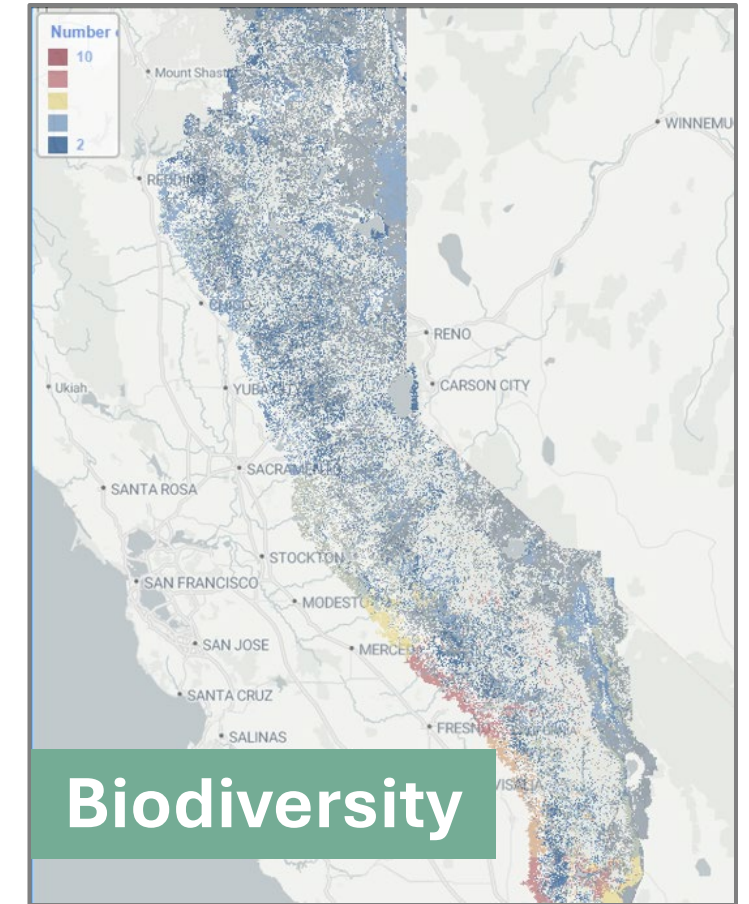
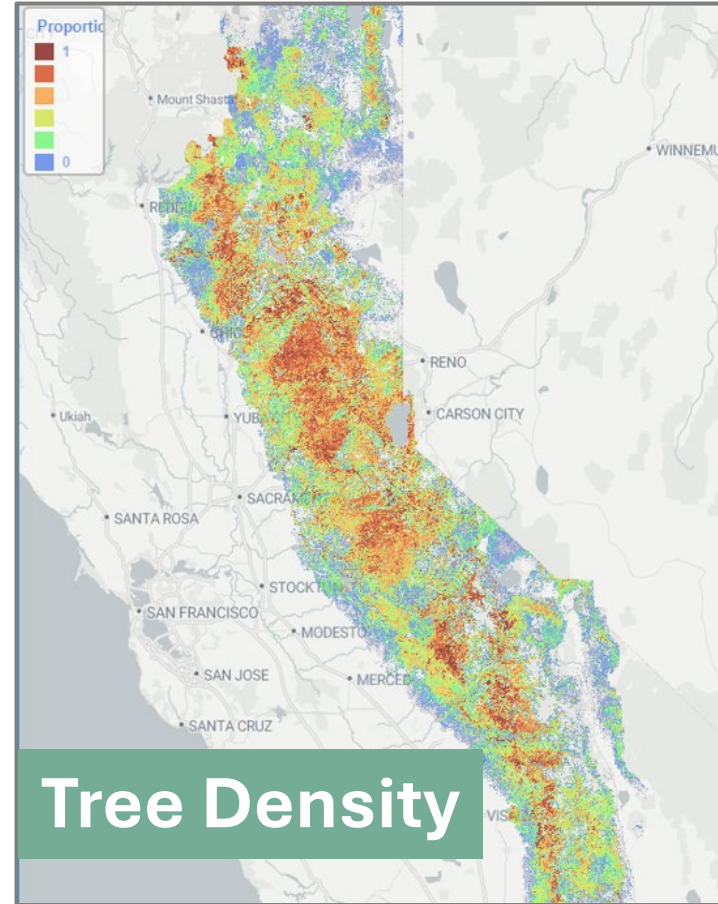


# Project Portfolio

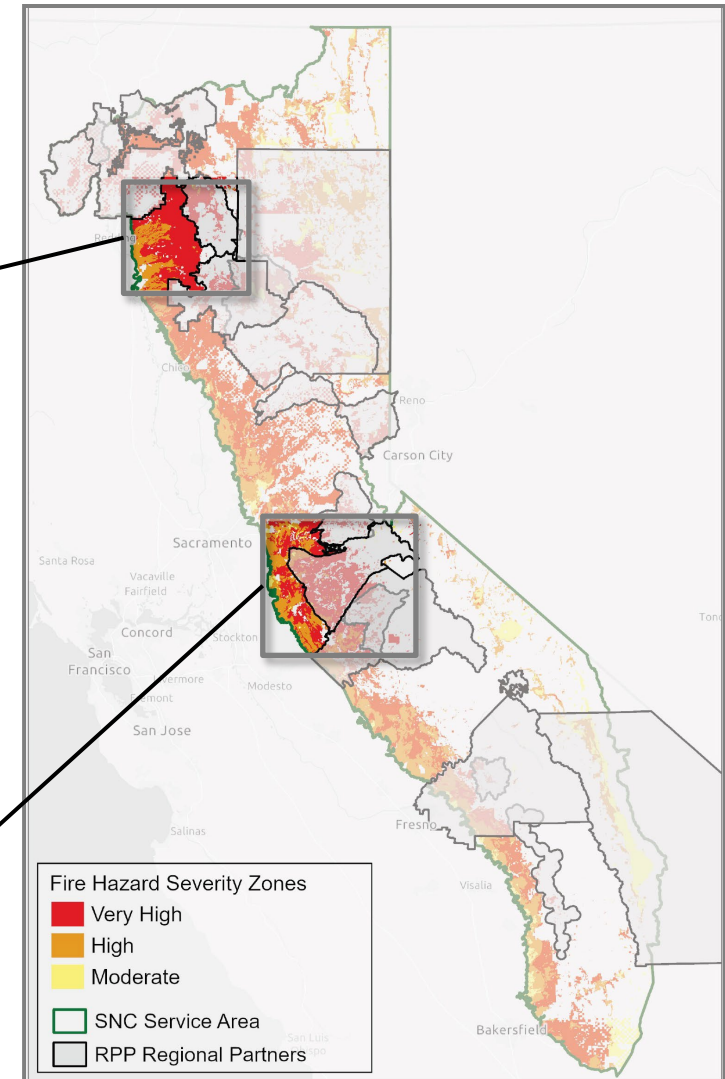
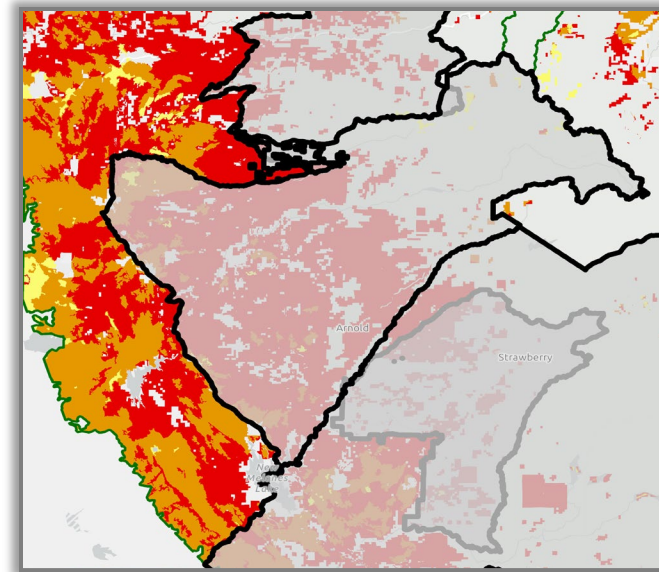
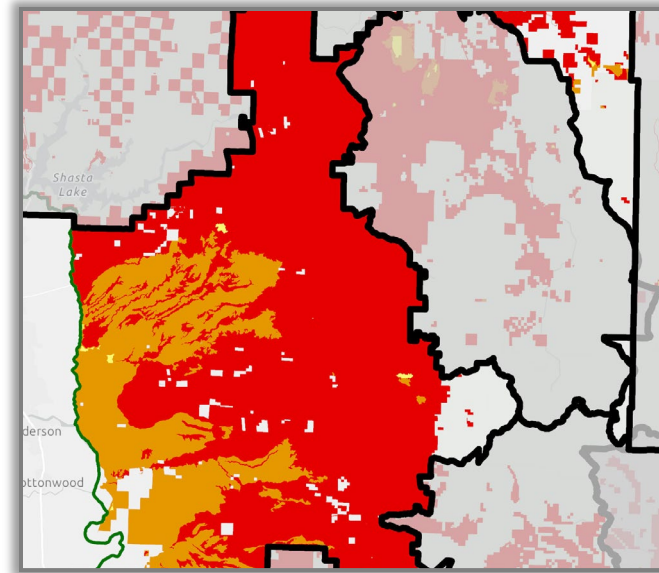
- Location
- Status
- Acres
- Cost
- Objective/Type
- Identification Strategy



# Landscape Characteristics

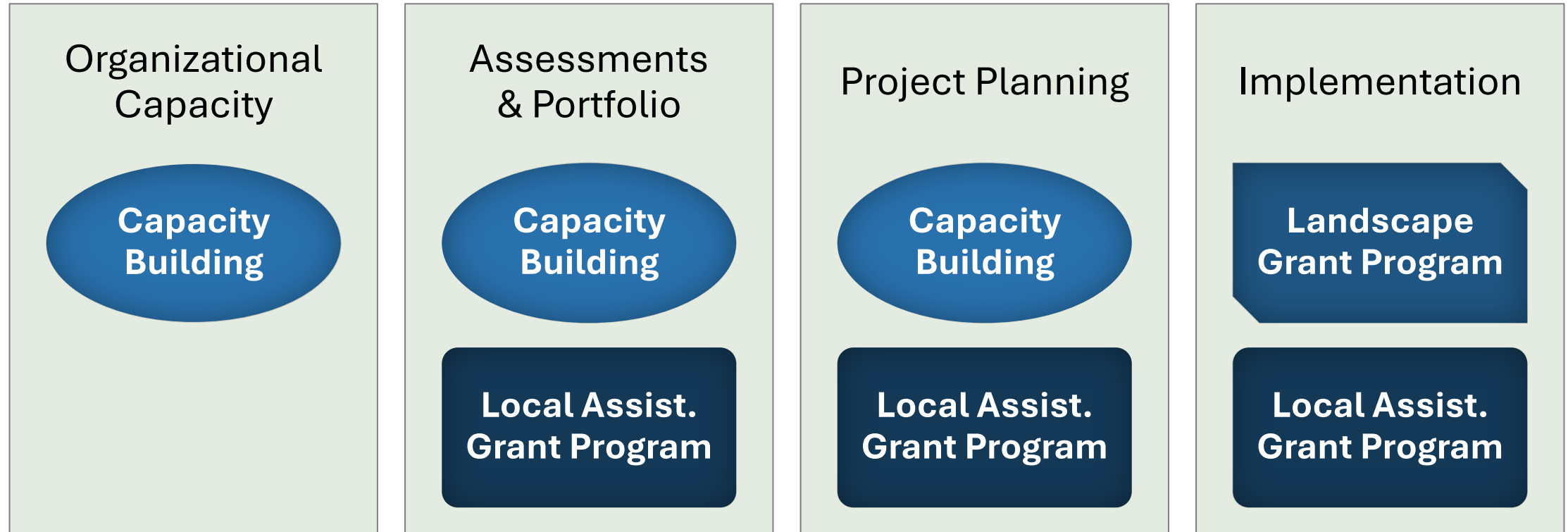


# Final Product





# SNC Support



Agenda Item 11:

# California Jobs First Program Update

Brittany Covich  
*Division Chief, Policy & Outreach*





CALIFORNIA JOBS

**FIRST**



CALIFORNIA  
JOBS FIRST



# Regions





# Counties

- Butte, Glenn, Tehama, Plumas, Sierra, Tehama, Trinity, Shasta, Lassen, Siskiyou, Modoc
- Colusa, El Dorado, Placer, Nevada, Sacramento, Yolo, Yuba, Sutter
- Alpine, Mono, Inyo, Amador, Calaveras, Tuolumne, Mariposa
- Madera, Fresno, Kings, Tulare

# Funding Available



**\$5 million**

Outreach,  
facilitation, Regional  
summary/ strategy



**\$14 million**

Competitive  
Catalyst Fund  
Grants



**\$150 million**

Implementation  
(statewide over three  
years)



# Program Activities

- Summer 2023: ‘High Road Transition Collaboratives’
- Nov. 2023: Regional Summary
- Aug. 2024: Catalyst Fund Grants
- **Sept. 2024: Regional Strategies Plan**
- 2025–2027: Implementation Program



**CALIFORNIA'S  
WILDFIRE & FOREST  
RESILIENCE  
ACTION PLAN**



**A COMPREHENSIVE STRATEGY  
OF THE GOVERNOR'S  
FOREST MANAGEMENT  
TASK FORCE**

**JANUARY 2021**

## **Task Force Overlap**

- Natural & Working Lands
- Clean Energy & Resilience
- Climate Solutions
- Tourism/Recreation
- “One Water”
- “Working Lands” Value Chains





# SNC Alignment

- Public land access
- Holistic forest & watershed management
- Biomass transportation infrastructure
- Funding solutions
- Workforce, stewardship, & business development plan

Sierra Nevada Conservancy

2024–2029

**STRATEGIC PLAN**



# Next Steps

- Track Regional Strategies & investment needs
- Continue to participate in Regional work groups
- Support applications from the Sierra-Cascade (biomass, workforce, recreation)





Agenda Item 12:

# **Wildfire Recovery and Forest Resilience Directed Grant Program Award Recommendation**

Andy Fristensky

*Division Chief, Field Operations & Grants*





# Program Focus

- Multi-benefit projects
- Landscape-scale projects
- High-impact projects
- Wildfire recovery
- Regional Forest and Fire Capacity projects

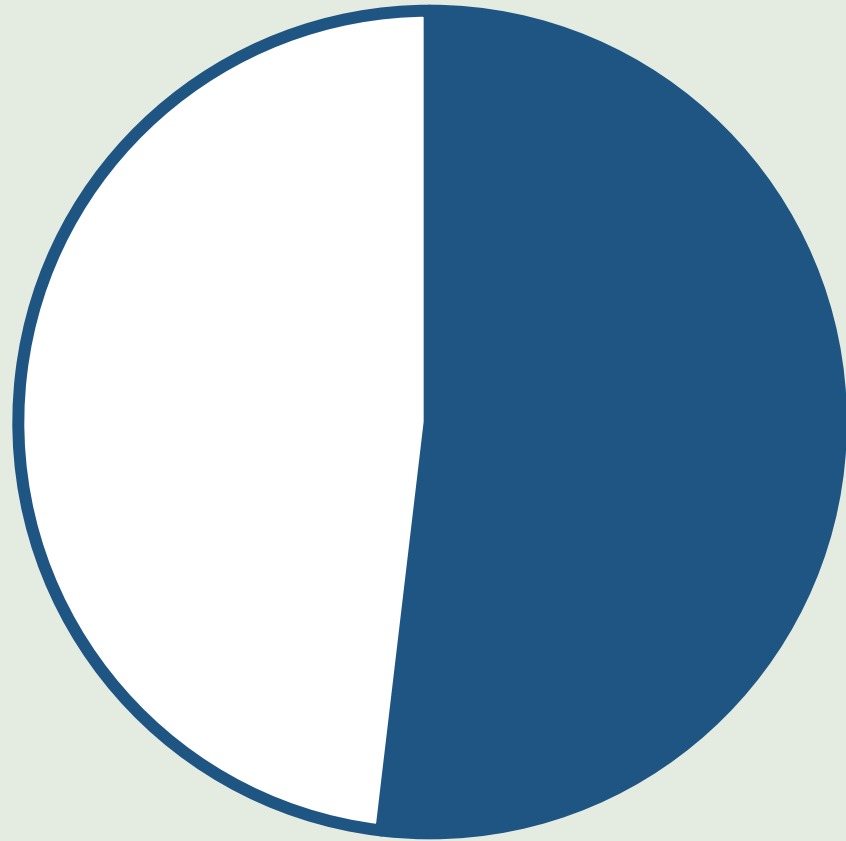


# Program Funding

2020-2022:  
**\$78.85 mil**

2023:  
**\$35.15 mil**

## Total Requested



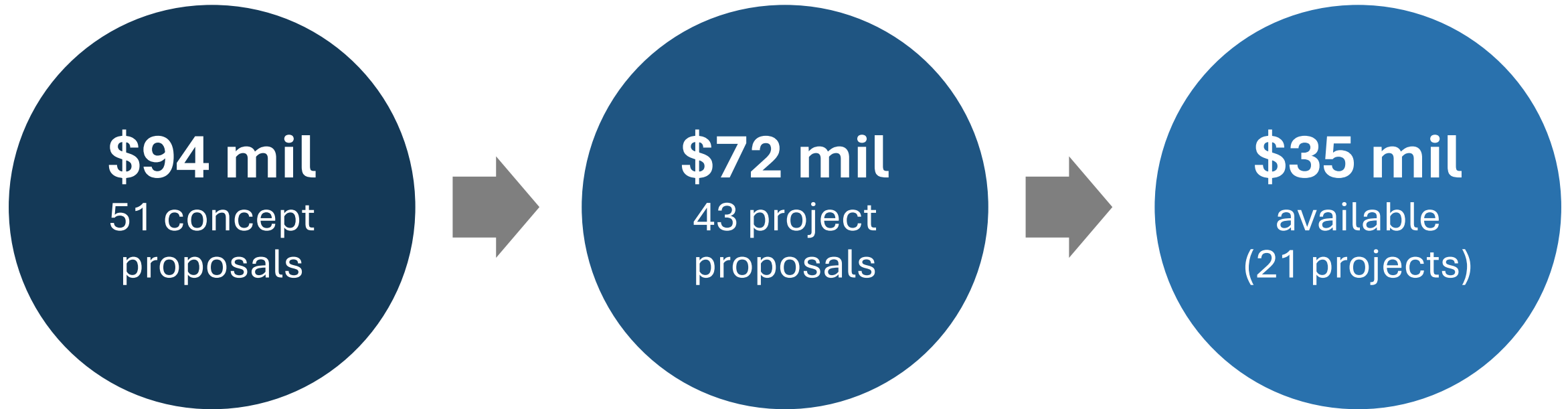
■ Awarded   ■ Remaining

## 2020-2022 Cycles

- \$152 million requested
- \$78.85 million awarded
  - 58 projects
  - 640,000 acres



# 2023 (Current) Cycle



# 2023 Cycle Award Summary



\$35,106,096 for 21 projects:

- 445,000 acres (planning)
- 10,500 acres (treatment)
- 3 biomass/wood-utilization facilities

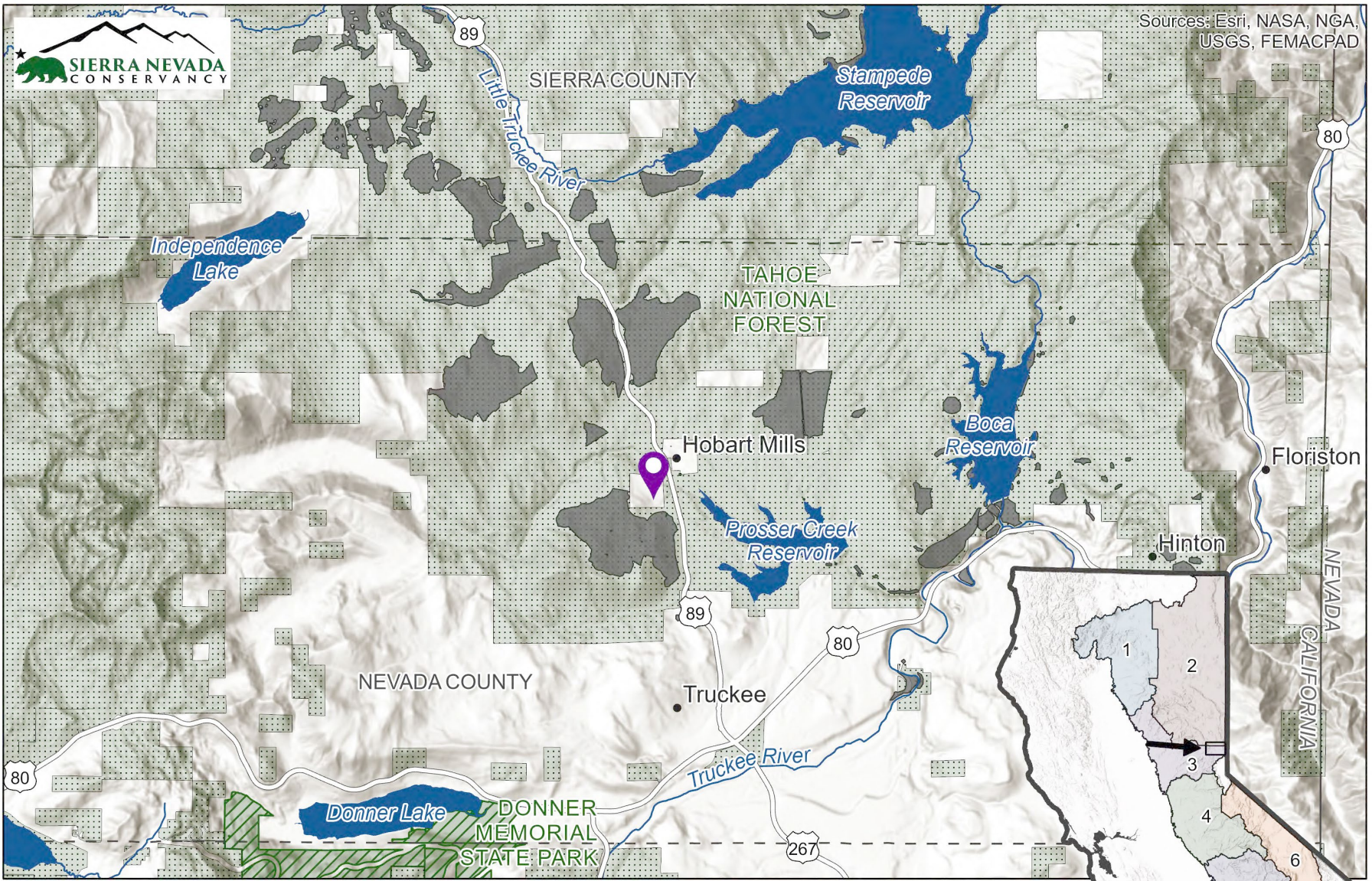




## 2023 Cycle Timing

- March & June 2024:  
\$33,561,146 awarded (20 projects)
- September 2024:  
\$1,544,950 recommended (1 project)
  - **#1694 Alpenglow Timber Sawmill Project**

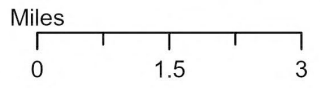




Sources: Esri, NASA, NGA, USGS, FEMACPAD

# Project Location

1694: Alpenglow Timber Sawmill Project  
Sierra Business Council



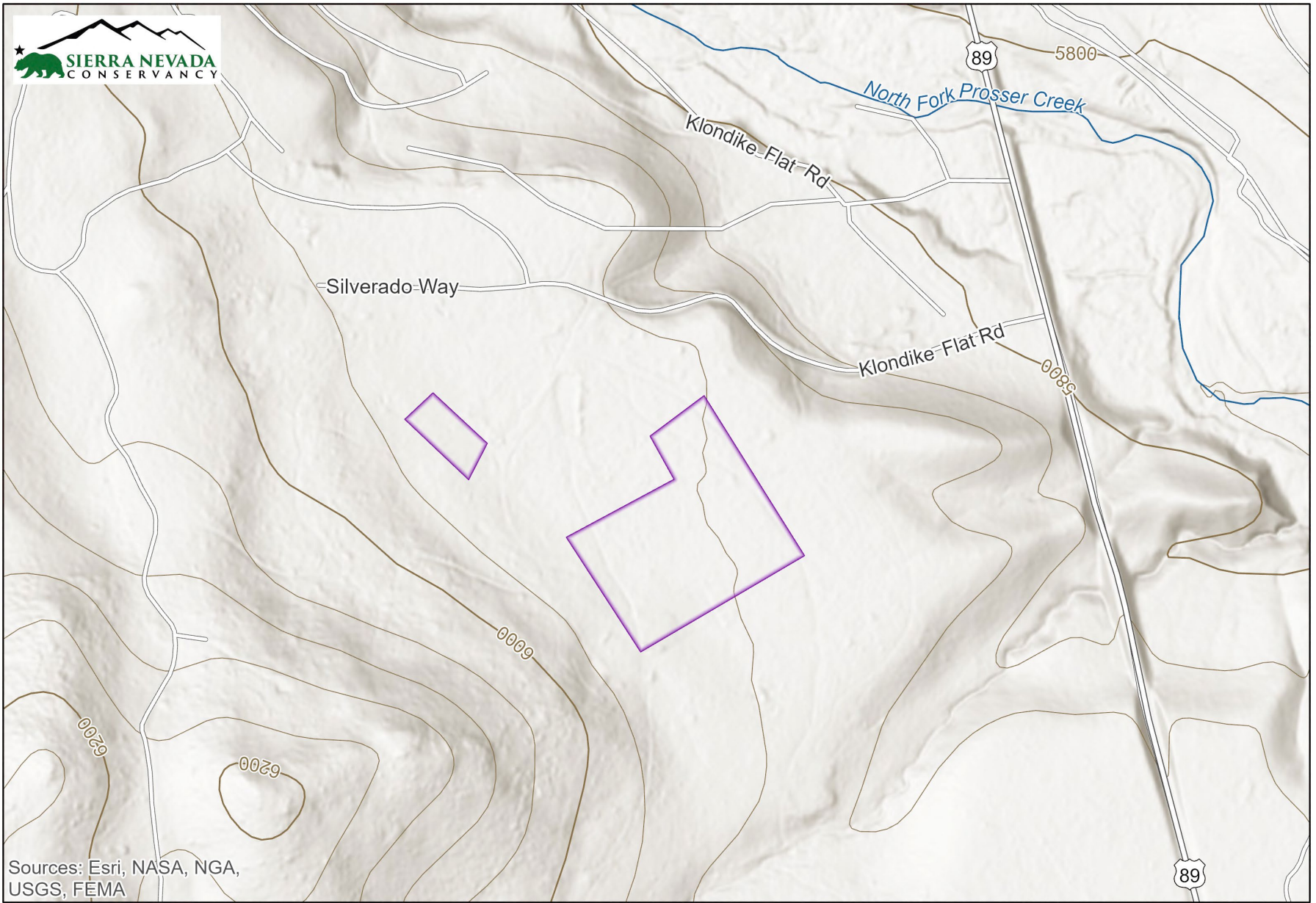
Project Location

- State Parks
- US Forest Service
- Other SNC Implementation Projects

1. Northwest Subregion
2. Northeast Subregion
3. North Central Subregion
4. South Central Subregion
5. Southwest Subregion
6. Southeast Subregion



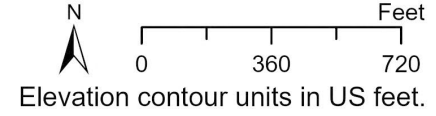




Sources: Esri, NASA, NGA, USGS, FEMA

1694: Alpenglow Timber Sawmill Project  
Sierra Business Council

 Project Location



# Topo Map



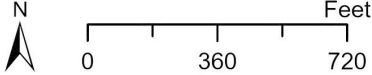




# Project Aerial

1694: Alpenglow Timber Sawmill Project  
Sierra Business Council

 Project Location





# Site and Log Deck









# Environmental Compliance Required

## IS/MND

(Initial Study/Mitigated  
Negative Declaration)

## MMRP

(Mitigation Monitoring  
and Reporting Program)

# Recommendation (CEQA Determination)

- Certify that the Board independently reviewed and considered the information in the Alpenglow Timber Use Permit IS/MND (2024) and accompanying MMRP.
- Find that the Board concurs with the Alpenglow Timber Use Permit IS/MND and MMRP.



# Recommendation

(Project Approval &  
Grant Award)

If the Board concurs with the Alpenglow Timber Use Permit IS/MND and MMRP:

- Authorize the Executive Officer to file a Notice of Determination as a responsible agency for the Alpenglow Timber Sawmill Project (1694),
- Approve a grant award in the amount of \$1,544,950 to the Sierra Business Council, and
- Authorize staff to enter into agreements necessary for project implementation.